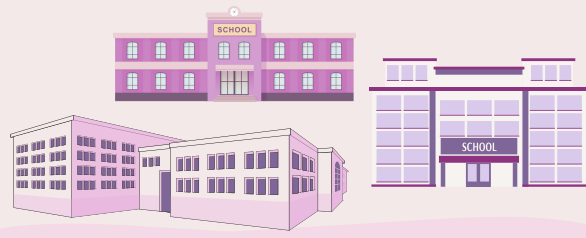




1



## What is a Multi-Academy Trust – MAT?

A Multi-Academy Trust is a not-for-profit organisation that runs several state schools under one legal and leadership framework. (DfE Academy trust governance guide, 2024).

MATs are publicly funded educational charities whose funding comes directly from the Department for Education and whose Boards are legally accountable for all schools in the trust.

MATs employ staff, manage budgets and buildings, and ensure every school meets national standards for education, safety and inclusion. (DfE Types of school: academies, 2024).

**In short: a MAT is one team of schools sharing expertise, so each child benefits from the strengths of all.** (DfE Trust Quality Descriptions, 2023).



2

## About Maiden Erlegh Trust (MET)?

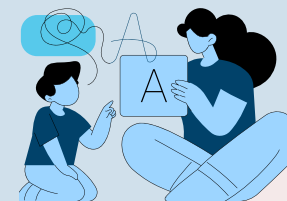
MET is a **community of schools** across Berkshire and South Oxfordshire, including primary, secondary, special and alternative provision. (MET website, Our Schools).

MET provides **central support** for curriculum, inclusion, safeguarding, behaviour, and professional learning across all its schools (MET website, Shared Services / Professional Learning).

MET is large enough to receive **direct funding for capital improvements from the government**, allowing it to invest more rapidly in safe, high-quality learning environments (DfE Condition Funding Methodology 2024–25).

It has a **strong record of school improvement** – Ofsted praised Great Hollands Primary for being “transformed since joining MET.”

Its values – **Aim High, Be Inclusive, Work Together** guide decision-making. (DfE Trust Quality Descriptions, 2023).



4

## What are the Benefits to Children and Families of Going to a Trust School?

- **Teaching quality that travels.** Research shows strong trusts can achieve greater pupil progress compared with similar LA schools through shared curriculum, collaboration and centralised CPD. (EPI Features of Effective School Groups, 2024; DfE Trust Quality Descriptions, 2023).
- **Help at the right time and in the right place.** Trusts can deploy expert staff e.g. subject, SEND, and behaviour specialists to wherever they are most needed rather than relying on external agencies. (DfE SEND and AP Improvement Plan, 2023).
- **Calm, predictable classrooms.** Shared behaviour systems help pupils feel secure and focused, reducing disruption and supporting consistent routines. (DfE Behaviour in schools, 2024).
- **More to take part in.** Pooling staff and resources opens up opportunity clubs, arts, sport and leadership that smaller schools alone can not provide. (DfE Trust Quality Descriptions, 2023).
- **Broad, well-sequenced curriculum.** Supports curiosity, creativity and the whole child’s development. (EEF A balanced curriculum for learning and development, 2022)
- **Improved learning environments.** Through faster school improvement and direct capital funding. (DfE Trust Quality Descriptions, 2023; DfE Condition Funding Methodology, 2024–25).



## Why Do Schools Join MATs? To:

3

- **Access specialist expertise** in curriculum, safeguarding, SEND and behaviour. (DfE Multi-academy trusts: benefits, challenges and functions, 2020).
- **Share professional development and leadership training** that improves teaching quality. (EEF High-quality teaching for every pupil, 2023).
- **Gain operational expertise** in back-office functions so they can focus on teaching and learning. (DfE Academy trust handbook, 2024).
- **Strengthen school improvement** through evidence, data and peer review. (CST From Good to Great, 2025).
- **Create consistency** for families via shared policies and values across schools. (DfE Trust Quality Descriptions, 2023).
- **Closer accountability and direct support** from improvement experts.

## Some of the Benefits of MET Schools

5

- **Expert teaching.** MET trains new teachers and provides sector leading ongoing training for all staff through the Maiden Erlegh Institute, ensuring pupils benefit from the latest approaches to teaching and learning.
- **Specialist help.** MET central school improvement team has experts in curriculum development, Inclusion, SEND, Behaviour and Safeguarding who work across schools, offering support so children get the right help at the right time.
- **Breadth of expertise.** MET is diverse and includes primary, secondary, special and alternative provision, resulting in diverse academic and pastoral expertise to support children holistically.
- **Proven improvement and oversight.** Regular trust-led reviews and coaching helps school keep improving.
- **Stronger facilities.** As a trust of nearly 5,000 pupils, MET receives annual capital funding directly from government, helping it maintain and enhance school buildings more efficiently than smaller or standalone schools.
- **Richer experiences.** Shared programmes across MET schools expand opportunities in arts, sport, and leadership.